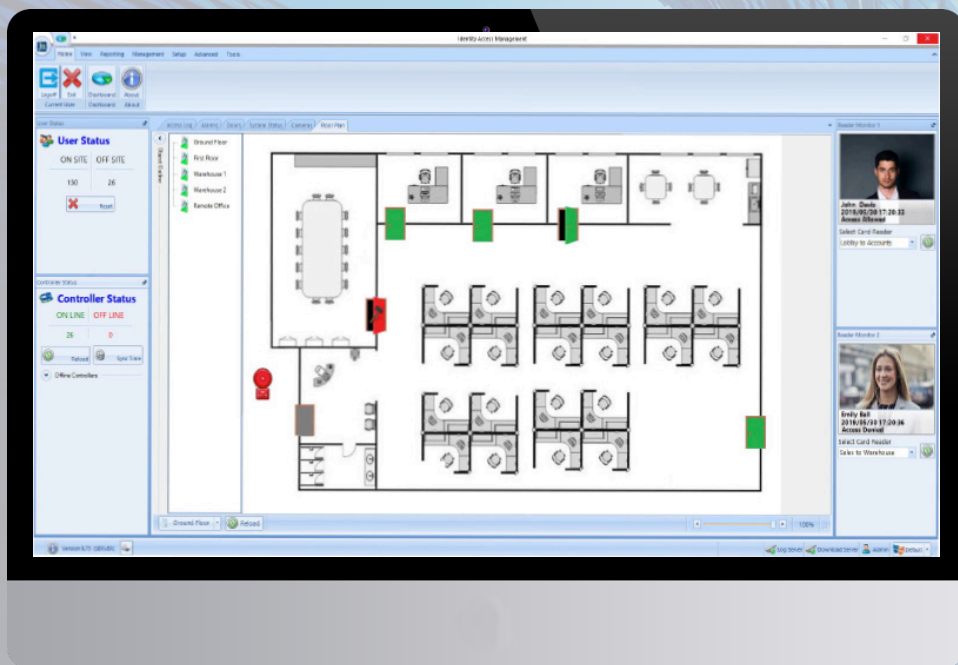


controlsoft®  
access control

Identity Access 9



Access Control | Biometric Solutions | Wireless Handles | Badge Printing

# Why Identity Access?

## Flexible

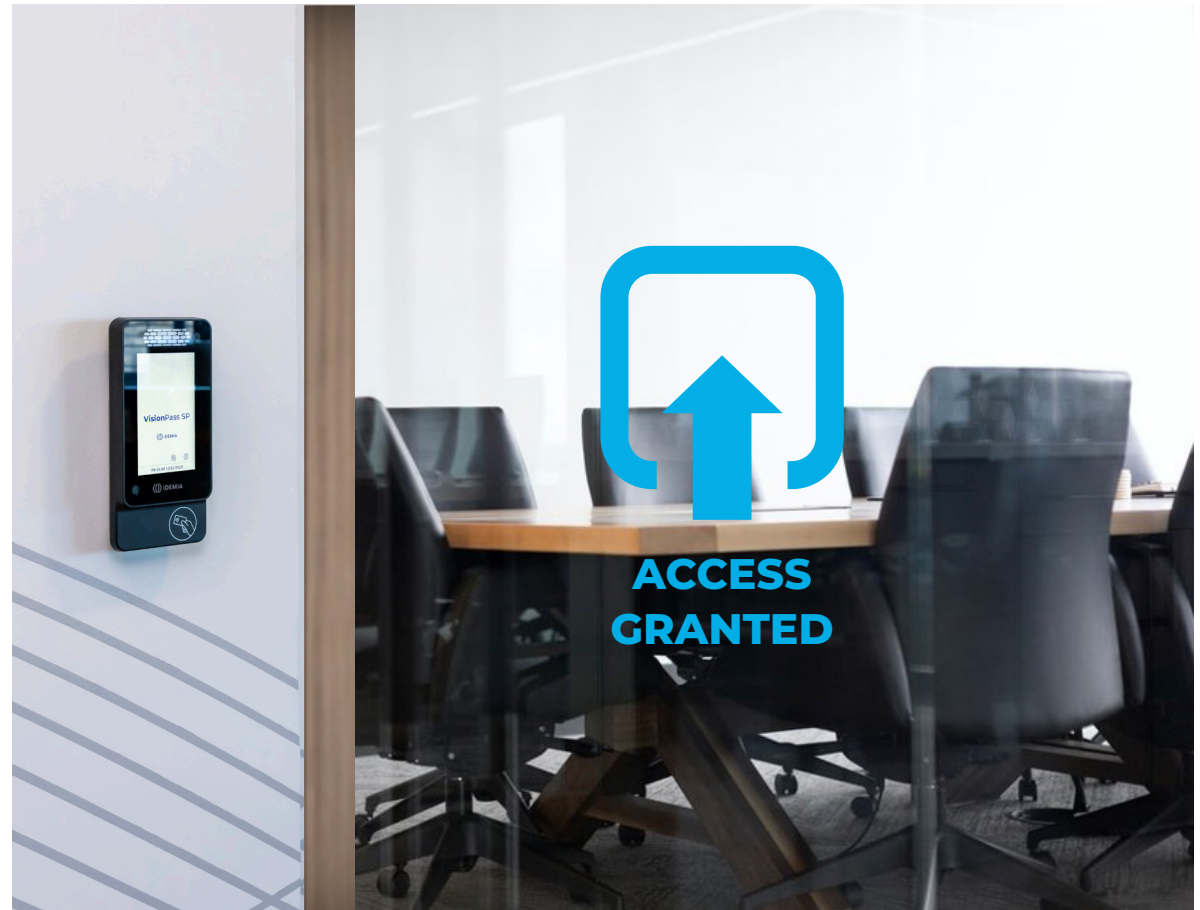
From small to global multi-site solutions, Identity Access provides complete building security management functionality built into a fully customizable, user friendly platform.

## Integrated

While maintaining a simple and intuitive user interface, Identity Access houses many advanced features and integrates with best in class manufacturers.

## Multiple Identities

The Identity Access platform is compatible with the latest smart card readers, biometric solutions and wireless locks. Managing Multiple Identities has never been so easy.



# Identification Options

With the Identity Access Platform, you're not limited to one Identification Method. Mix and match different identification options to best suit your facilities needs.

## Smart Card Readers

- Cards, key fobs and smartphone credentials
- Highly secure
- Available with PIN Pads



## Wireless Locks

- Compatible with smart cards
- Deploy without cabling
- Retrofit existing handles



## Biometric Readers

- No need to carry a card or remember a PIN
- Unable to share identities
- Identify users in under 1 second



## Mobile Access

- High security of a card without needing to carry one
- Mobile Credentials cannot be lost or stolen
- Excellent backup authentication option



# Software Features

## Mobile Access

HID's mobile access gives you smart card level security without the need to carry one. Issue mobile credentials to a user from the Identity Access software.



## Biometrics

Enrol fingerprints and manage your biometric readers without the need for additional software packages.



## Time & Attendance

Record Time & Attendance events which can be exported into 3rd party applications.



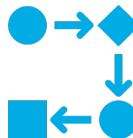
## Email Alerts

Need to be notified when someone turns up late or when a stolen card is used? The system can be configured to send an email based on ANY system event.



## Events & Actions

Events and Actions can be used to create sophisticated logic using a simple 'IF THIS, THEN' rule system which can be configured to control software and hardware logic for custom operations.



## Lockdown

The security of the premises can be increased at the click of a button to disable predetermined user groups or all user groups (Level 1) and Request to Exit Buttons (Level 2).



## Time Zones

A quick and easy way to control the days / times that users can gain access or clock in. Time zones can also control a door or elevator for "free access" at defined times of the day so users can freely move around without showing a card.



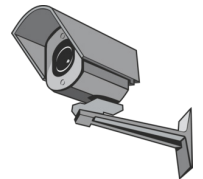
## Fire Alarm

Integrate the access control system with your Fire Alarm system so that selected doors automatically open in the event of a Fire Alarm activation.



## CCTV Snapshot

Take a snapshot from your CCTV camera and link it to an event in Identity Access. For example, take a snapshot when a user is denied access to the server room.



## ANPR

Identity Access is fully compatible with wiegand ANPR cameras (SHA-1 26-Bit).



# Software Features

## Remote Door Control

Grant access through doors with a simple click on the screen on the Identity Access Dashboard



## Reports

A complete security system must include full auditing and reporting capabilities. Our Report Wizard provides software operators with the ability to create and customise their own specific reports from within the Identity Access application.



## Elevator Control

Users can be granted access to any combination of up to 63 floors of an elevator. The system also supports multiple elevators.



## Software Operators

System administrators can configure the permission levels for operators of the software application. From operators with wide-ranging responsibilities to those with single function duties, Identity Access enables administrators to assign an individual username and password and tailor their operators' system experience directly to their jobs.



## Import / Export Data

User data can be imported directly from an Outlook vcf file or from a third-party system via a CSV or text file. Time & Attendance data can be exported in various formats using our Export wizard which makes the task very straightforward.



## Bulk Card Upload

Users who are using sequential numbering can bulk upload multiple users at once.



## Photo ID Card Printing

Create card templates and print personalised ID cards for one or more users with the click of a button.



## Interactive Site Maps

Improve the user experience by providing system information on an interactive site map with interactive buttons, counters and timers.



## Counters and Timers

Enhance the flexibility of the system by using counters to count activity on the system such as the number of users who have entered a room, and timers to create timed activities.



# Specification

Part Numbers	Lite	Professional	Enterprise
One-time Purchase	IA-LITE	IA-PRO	IA-ENT
Annual Subscription	SUB-LITE	SUB-PRO	SUB-ENT

Features	Lite	Professional	Enterprise
Maximum Number of Doors or Readers	12	64	UNLIMITED
Unlimited Number of Cardholders	■	■	■
Group Management	■	■	■
Real Time Access and Alarms Events Viewers	■	■	■
Employee, Visitor and Contractor Management	■	■	■
Unlimited Number of Client PCs	■	■	■
Support for OSDP Readers	■	■	■
Support for ASSA ABLOY APERIO Wireless Locks	■	■	■
Controller, Door and Report Wizards	■	■	■
Time Zone to Schedule Group, Door & PIN Pad operation	■	■	■
Issue Temporary Cards	■	■	■
Multiple Sites	■	■	■
User On Site / Off Site Counter	■	■	■
Operator Software Door Control	■	■	■
Configurable User Data Fields	■	■	■
Display User's Photo on Card Swipe	■	■	■
Microsoft SQL Express Database Platform	■	■	■
Snow Day Rule	■	■	■
Photo ID Card Printing*	■	■	■

\*Badge printing requires an Asure ID license per PC (Ordering Part No. IA-AID).

[www.controlsoft.com](http://www.controlsoft.com)

Features	Lite	Professional	Enterprise
Bulk Card Upload	■	■	■
Fire Alarm Roll Call Report	×	■	■
Site Lockdown	×	■	■
Wiegand ANPR Integration (SHA-1 26-bit)	×	■	■
Time & Attendance Reporting	×	■	■
Fingerprint Enrolment	×	■	■
Direct Integration with Morpho Biometric readers	×	■	■
Email Notifications	×	■	■
AntiPassBack	×	■	■
Preconfigured Logic for Airlocks and Turnstiles	×	■	■
Elevators	×	■	■
Counters and Timers	×	■	■
Programmable Inputs and Outputs	×	■	■
Interactive Site Maps	×	■	■
Events and Actions	×	■	■

## Minimum System Requirements

Server	Client	Supported Operating Systems
Intel i5 processor @ 3GHz	Intel i3 processor @ 3GHz	Windows 10 Home or Pro (x64)
8GB RAM	4GB RAM	Windows 11
100GB Free Disk Space	100GB Free Disk Space	Windows Server 2016
10/100 Network Card	10/100 Network Card	Windows Server 2019
USB Port	USB Port	Windows Server 2022
Screen Resolution = 1280 x 800 or higher	Screen Resolution = 1280 x 800 or higher	Windows Server 2025

**controlsoft**   
access control

Controlsoft have 30 years' experience in the development, manufacture and distribution of Access Control Solutions.

Controlsoft's evergreen, open architecture design takes advantage of the newest and best technologies today, while provisioning support for future technologies so that our solutions will deliver your needs now and in years to come.

With over 10,000 systems in daily use around the world, we are reliable and committed to excellence in our products, customer service and support.

**Corporate Office:**

Controlsoft Limited  
The Stables Offices, Stones Farm  
Sherborne, Cheltenham GL54 3DH  
**Tel:** +44 (0)1451 844896  
**Email:** sales@controlsoft.com

**South Africa Office:**

Controlsoft (Pty) Ltd  
Block 1, Pendoring Office Park,  
299 Pendoring Road, Blackheath, Randburg, 2195  
**Tel:** +27 (0)11 792 2778  
**Email:** zasales@controlsoft.com

**US Office:**

Controlsoft Access Inc  
811 Boyd Ave., Suite 205, Pittsburgh, PA 15238  
**Tel:** +1-800-340-1407  
**Email:** namsales@controlsoft.com

In addition to our own products, we distribute many third-party products in order to deliver the complete solution to our partners. These include HID (Readers, Credentials and Fargo card printers), Idemia (Morpho Fingerprint Readers and VisionPass facial recognition reader), Third Millennium (Legic Readers) and Iris ID (Iris Readers).

Controlsoft believe in long term partnerships with both our Customers and Suppliers.

Please visit our website [www.controlsoft.com](http://www.controlsoft.com) for the most up-to-date datasheets and installation guides for all our products.

© 2024 Controlsoft Limited. All rights reserved. Controlsoft and the Controlsoft logo are registered trademarks of Controlsoft Limited in Europe, the U.S. and/or other countries. All other trademarks, service marks, and product or service names are trademarks or registered trademarks of their respective owners. July 2024 E&OE

[www.controlsoft.com](http://www.controlsoft.com)

**controlsoft**   
access control